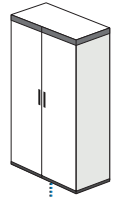
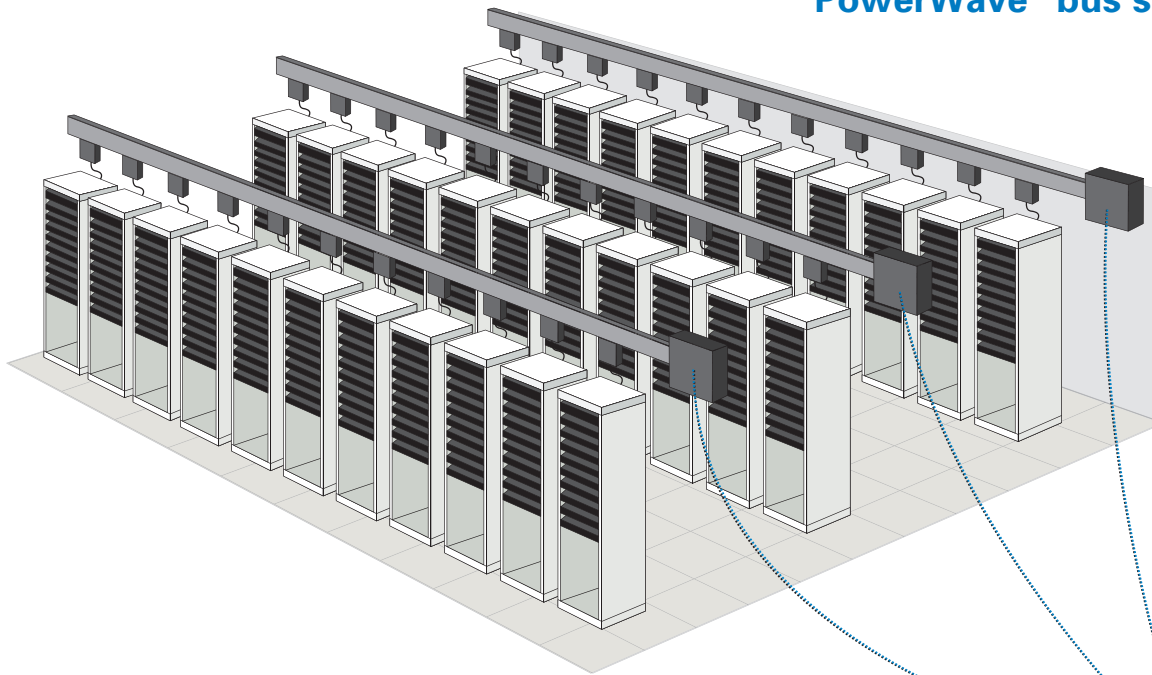


WaveStar BCMS Hub

Branch circuit monitoring system display



Powering Business Worldwide



Data center managers are tasked each day with collecting and managing a tremendous amount of information on the power architecture that supports critical loads.

Once this information has been gathered, the next step is to interpret data from the monitoring of each branch circuit or server load by using Eaton's patented Branch Circuit Monitoring System (BCMS).

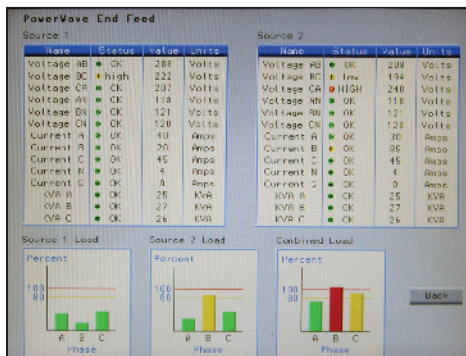
Eaton has both raised-floor and solid-floor solutions that employ BCMS to make load management easy.

The Eaton BCMS Hub brings together up to 70 downstream BCMS devices—at your finger tips—and allows you to focus where needed and stay ahead of power issues before they occur.

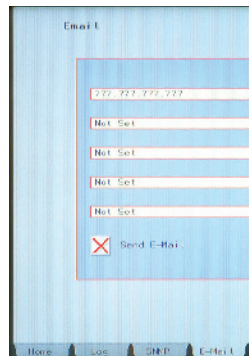


Collect

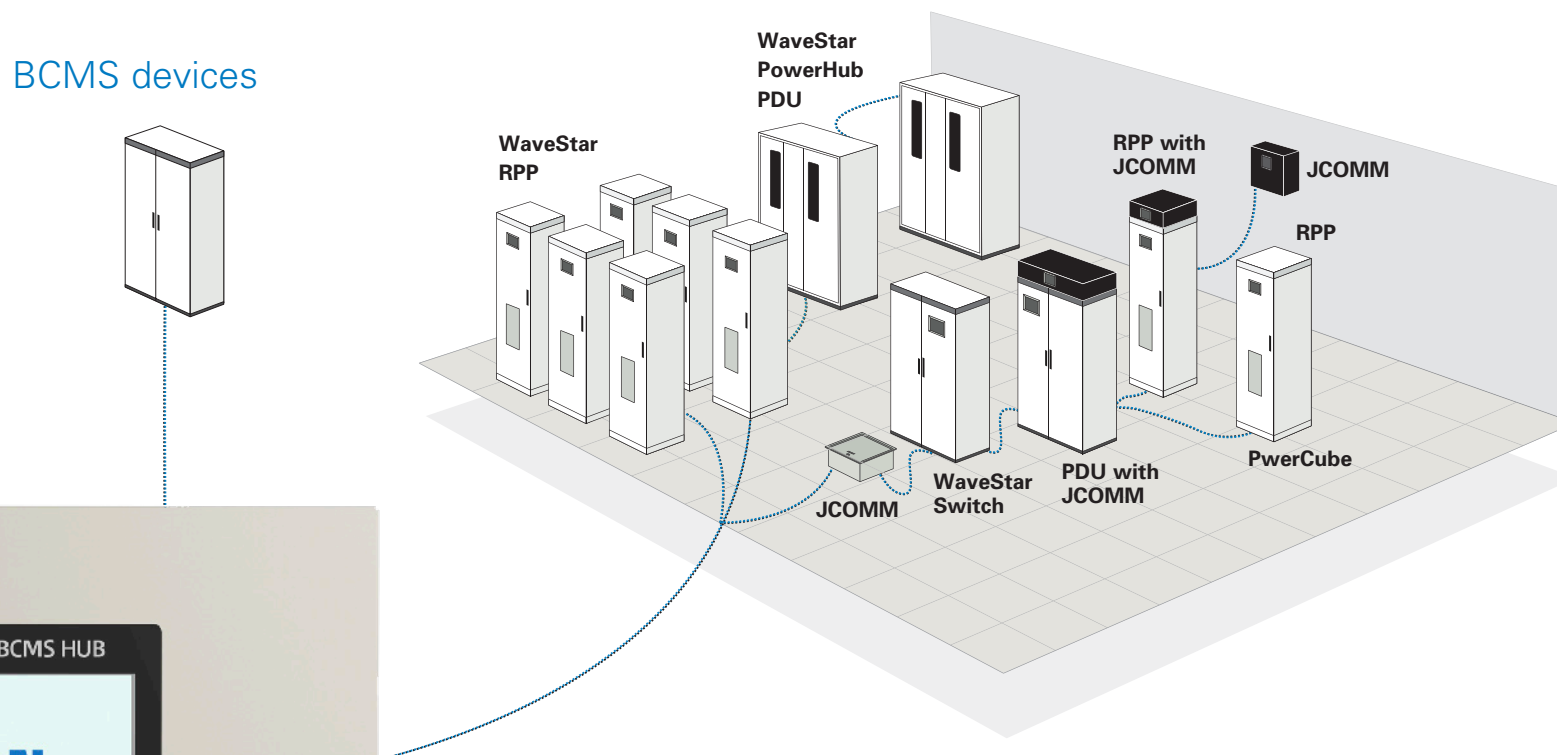
Man



- 1 Alarm event capture and log
Scroll through real-time events captured on-screen for easy interpretation
- 2 Alarm notification
Email, pager and IP addressable



BCMS devices



IP address access

The BCMS Hub can also be accessed via an IP address for real-time management of multiple devices over the web.

The standard BCMS Hub package also includes:

- Modbus® RTU protocol
- Touchscreen WaveStar® monitor to graphically show each BCMS-enabled panel board
- Standard reporting software with exportable Excel files
- Embedded web server IP addressable interface for remote monitoring
- Software that looks at alarms, current and power measurements in real time through TCP / IP connections

age

Perform

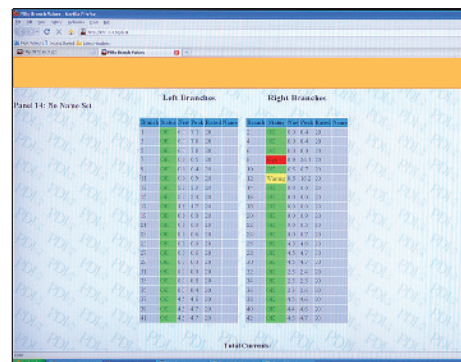


3 Security features

Scroll named users with log-in and password protection

4 Branch circuit graphs and tabulations

- By breaker and panelboard
- Actual, warning and alarm settings real time



Technical specifications

Number of Eaton BCMS cards	Number of WaveStar BCMS Hubs
1–35	1
36–70	2

Initial bill of material and Eaton service for the WaveStar BCMS Hub includes:

- Modbus RTU protocol
- Standard enclosure: 24" x 24" x 5" deep
- Local monitor to show all downstream BCMS-enabled power quality product data
- Standard reporting software that has exportable Microsoft Excel files
- IP addressable interface to allow for remote display and collection of BCMS information from a PC
- Software allows end user to look at several different measurements (alarms, voltage, current) in real time
- Eaton service: one day of product setup and customer training
- Stand-alone system connects to either IP address or to building management system
- Optional Modbus TCP/IP available

Testing

Eaton is dedicated to providing customized solutions to meet the specific requirements of your app

Centralized WaveStar BCMS Hub

Eaton's WaveStar BCMS Hub can collect information from downstream BCMS-enabled power quality products in a data center. Installation does not have to be inside the data center room and can communicate via multiple protocols to BMS and DCIM Systems.

Customization

Eaton is dedicated to providing customized solutions to meet the specific requirements of your application. Contact us at +1.800.225.4838 for further information and support.

Service and support

After your equipment has been installed, call on the Eaton service team, at 1.800.225.4838, for 24/7 support.

For more information, please visit:
Eaton.com/bcmshub