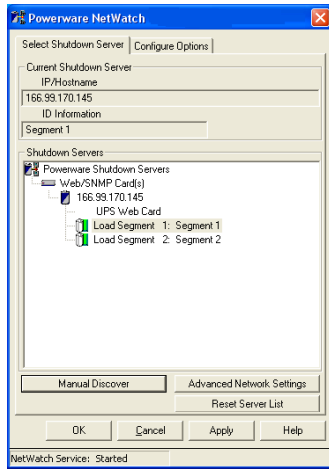
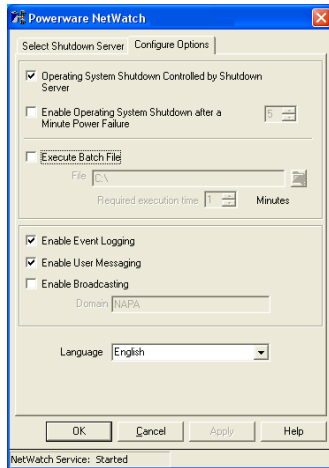


Eaton NetWatch Software Version 5.0



Shut down individual load segments without powering down all connected equipment.



Choose which shutdown and communication options best fit your needs.

NetWatch 5.0 UPS connectivity software is a critical component of Eaton's network shutdown solution. The NetWatch client software acts as a network-monitoring tool through a ConnectUPS Web/SNMP card, BestLink Web/SNMP adapter or the Eaton® Network Management Card (NMC). NetWatch allows you to configure up to 255 network clients to monitor the activity of a single UPS.

During an extended power failure, NetWatch works in conjunction with a network card to enable the automatic and graceful shutdown of your UPS-protected devices, such as servers or workstations. The card informs all registered NetWatch clients that it is time to shut down their respective operating systems, thus preparing them for the removal of AC power. NetWatch's robust configuration options also enable you to schedule shutdown and restart operations, and to receive user notifications.

NetWatch is now compatible with ESXi virtualization software from VMware. NetWatch handles extended power failures in a virtualized environment by sequentially shutting down the virtual machines before shutting down the host server, ensuring that no data is lost.



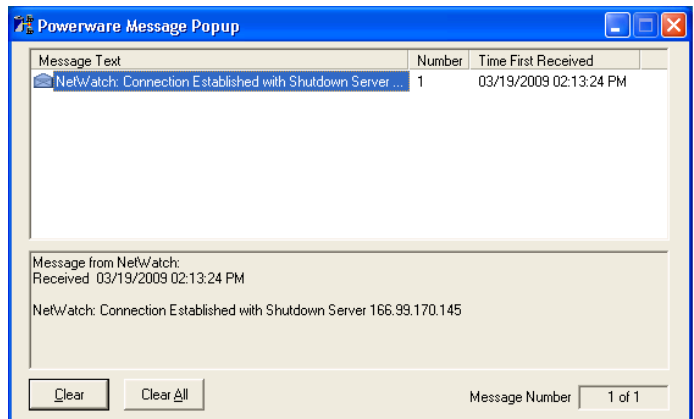
NetWatch Client 5.0 has met the Cisco Technology Developer Program test criteria for interoperability with Cisco's Unified Communications Manager 4.3. NetWatch enables safe, unattended shutdown and restart of Cisco Unified Communications in the event of a power loss.

NetWatch software comes free on the Eaton Software Suite CD that is standard with most Eaton UPSs. NetWatch can also be downloaded from www.powerware.com/Software/Netwatch_V5_info.asp.



Eaton NetWatch Client 5.0 has tested compatible with Cisco Unified Communications Manager 4.3. Go to www.eaton.com/PQ/cisco for disclaimer.

For more information, please visit www.eaton.com/powerquality or contact us at **800.356.5794**.



Receive messages from NetWatch right on your PC, via e-mail or by text.

NETWATCH OPERATING SYSTEM SUPPORT***NETWATCH V. / NOTES****Windows**

Windows 2000 (Server, Advanced Server, Professional)	NetWatch v. 4.2.0 (product maintenance discontinued)**
Windows XP (Home, Professional)	NetWatch v. 5.0.1.1
Windows Server 2003 (Standard, Web, Enterprise)	NetWatch v. 5.0.1.1
Windows Vista (Home Premium, Business, Ultimate)	NetWatch v. 5.0.1.1
Windows Server 2008	NetWatch v. 5.0.1.1

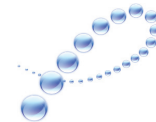
Linux - UNIX - Macintosh

Fedora Linux – Core 5, 6	NetWatch v. 5.0.1.1
HP-UX v. 10.20, 11.0, 11i (11.11), 11i v1.6 (11.22), 11i v2 (11.23)	NetWatch v. 5.0.1.1
IBM AIX v. 5.x, 6.1	NetWatch v. 5.0.1.1
MacOS v. 10.2.x, 10.3.x, 10.4.x, 10.5.x	NetWatch v. 5.0.1.1
Red Hat Enterprise Linux 3, 4	NetWatch v. 5.0.1.1
SCO Unix OpenServer v. 5.0.7	NetWatch v. 5.0.1.1
SGI Irix (MIPS) v. 6.5.2.x	NetWatch v. 5.0.1.1
Sun Solaris v. 8, 9, 10.x	NetWatch v. 5.0.1.1
SuSE Linux v. 9.x, 10.x	NetWatch v. 5.0.1.1
SuSE Linux Enterprise Server v. 9	NetWatch v. 5.0.1.1
System V, Release 4 (SVR4) – AT&T UNIX for NCR & Unisys Intel sys	NetWatch v. 4.1.1 (product maintenance discontinued)**
Ubuntu Linux v. 6.10	NetWatch v. 5.0.1.1
VMware ESX v. 3.5 (Linux Kernel 2.4)	NetWatch v. 5.0.1.1
VMware ESXi v. 3.5, 4.0 / vSphere Management Assistant VMA 4.0	NetWatch v. 5.0.1.1

Novell NetWare

Novell NetWare v. 5.0, 5.1, 6.0, 6.5 (latest Service Packs required)	NetWatch v. 5.0.1.1
--	---------------------

* Check www.eaton.com/powerquality for the most recent software updates and versions
 ** Active product maintenance discontinued due to OS developer no longer supporting OS



PowerChain
Management®

UNITED STATES
 8609 Six Forks Road
 Raleigh, NC 27615 U.S.A.
 Toll Free: 1.800.356.5794

www.eaton.com/powerquality

CANADA
 Ontario: 416.798.0112

LATIN AMERICA
 Brazil: 55.11.3616.8500
 Caribbean: 1.949.452.9610
 México & Central America:
 52.55.9000.5252
 South Cone: 54.11.4343.6323

EUROPE/MIDDLE EAST/AFRICA
 Denmark: 45.3686.7910
 Finland: 358.94.52.661
 France: 33.1.6012.7400
 Germany: 49.0.7841.604.0
 Italy: 39.02.66.04.05.40
 Norway: 47.23.03.65.50
 Portugal: 55.11.3616.8500
 Sweden: 46.8.598.940.00
 United Kingdom: 44.1753.608.700

ASIA PACIFIC
 Australia/NZ: 61.2.9693.9366
 China: 86.21.6361.5599
 HK/Korea/Taiwan: 852.2745.6682
 India: 91.11.4223.2300
 Singapore/SEA: 65.6829.8888

Eaton and PowerChain Management are trade names, trademarks and/or service marks of Eaton Corporation or its subsidiaries and affiliates.

All other trademarks are property of their respective owners.

©2009 Eaton Corporation
 All Rights Reserved
 Printed in USA
 SFT33FXA
 August 2009