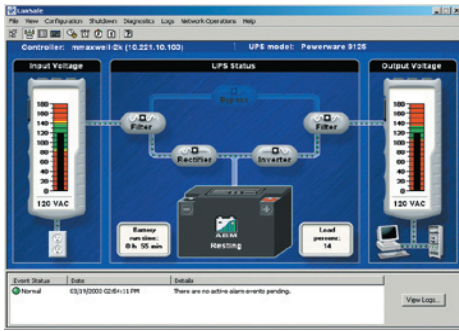


# Eaton LanSafe Power Management Software



## Features

- Sequential SafetyNet shutdown
- UPS group shutdown and control
- Work-in-progress saved throughout the network
- Stealth Mode Operation
- Cost Savings Calculator
- Event history summary
- Battery replacement warning
- Network & serial/USB connections
- Status@aGlance™ feature
- Power on/off scheduling via calendar
- UPS load segment (receptacle) control
- Local/remote UPS power on/off
- Power-on delay
- PowerGraph
- Email alerts
- Network broadcast alerts
- Command execution on UPS alerts
- Personalized UPS alert notifications
- SNMP proxy agent-GET and SET support
- Support for Eaton's Powerware and Pulsar series UPS models, and APC UPS

Running mission-critical applications and connecting widely-distributed nationwide and global operations are key strategic initiatives in today's business organizations. The ability to provide a steady, clean and undisturbed power flow to IT hardware in the network is paramount in keeping the systems available at all times.

However, the primary purpose of the IT infrastructure is to process, store and protect the information that is stored or en-route in the network. The data itself, and the ability to move it and process it at any given time, is priceless.

Eaton® LanSafe® power management software provides, in combination with an uninterruptible power system (UPS), the best possible protection for this valuable data. Whether at home or at work, LanSafe has you covered with its unique, proactive risk-management features.

## Why Use LanSafe Software?

1. Prevent system crashes – when a power failure outlasts the UPS battery runtime, LanSafe automatically performs a graceful operating system shutdown.
2. Avoid data loss – LanSafe saves all work-in-progress.
3. Protect valuable applications – LanSafe protects from corruption by closing applications in an orderly fashion.
4. Stay informed – monitor and receive UPS alarms via network broadcasts, SNMP, email, pager or mobile phone.
5. Control your power – manage all UPSs on the network, check battery health, and create sequential shutdown scenarios.
6. Communicate with NMS - integrate UPSs into the SNMP network management system.
7. With support for Eaton Powerware, Eaton models and APC UPSs, you can manage a multi-vendor power protection infrastructure with one power management software package, LanSafe.



Powering Business Worldwide

## LanSafe - The revolution of power management

The next generation of LanSafe power management software introduces a number of revolutionary features to the power management arena.

### Cost Savings Calculator

The patent-pending Cost Savings Calculator can be used to determine the amount of money saved by the UPS solution due to prevented downtime.

## Stealth Mode Operation

The exclusive Stealth Mode Operation feature enables LanSafe to run invisibly in the background without visual traces. This capability is particularly useful when integrating the application into a POS, ATM, or other environment where users should not be aware of LanSafe.

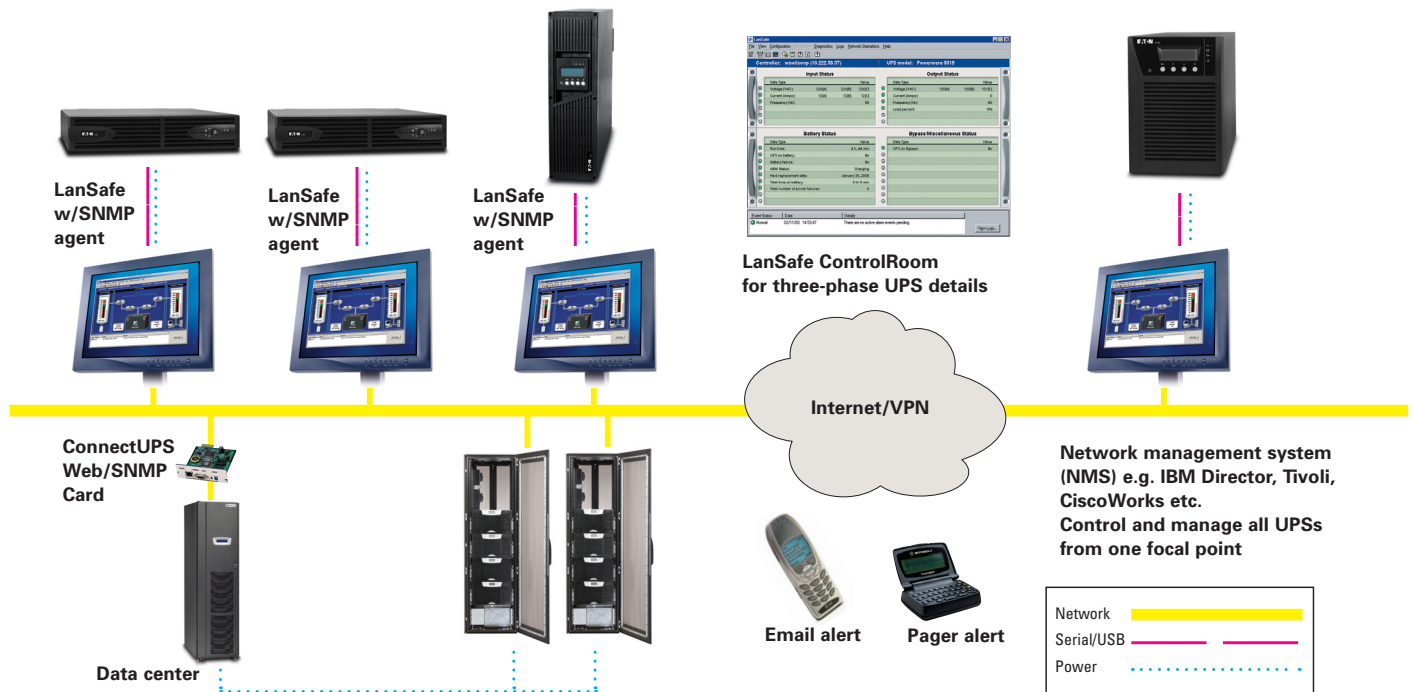
## Three Optional Views

The 3-D PowerScope View, along with a new innovation, the ControlRoom View, takes the guesswork out of understanding UPS metering and status information. PowerScope is the default for viewing single-phase UPSs while ControlRoom serves as the default for three-phase UPSs. The third display format available is the History View, which allows users to review a year of UPS events at-a-glance, in a calendar format. The favorite default view can be changed at any given time via the LanSafe preferences menu.

## Automatic Regional Settings

LanSafe incorporates Automatic Regional Setting Detection with local language support capabilities. Date, time, temperature and UPS receptacle graphics are automatically selected according to the operating system's regional settings. Measurements are displayed around the globe in formats users are familiar with.

With intuitive views and functions, a simplified installation procedure, and an array of powerful new features, comprehensive power management has never been easier.



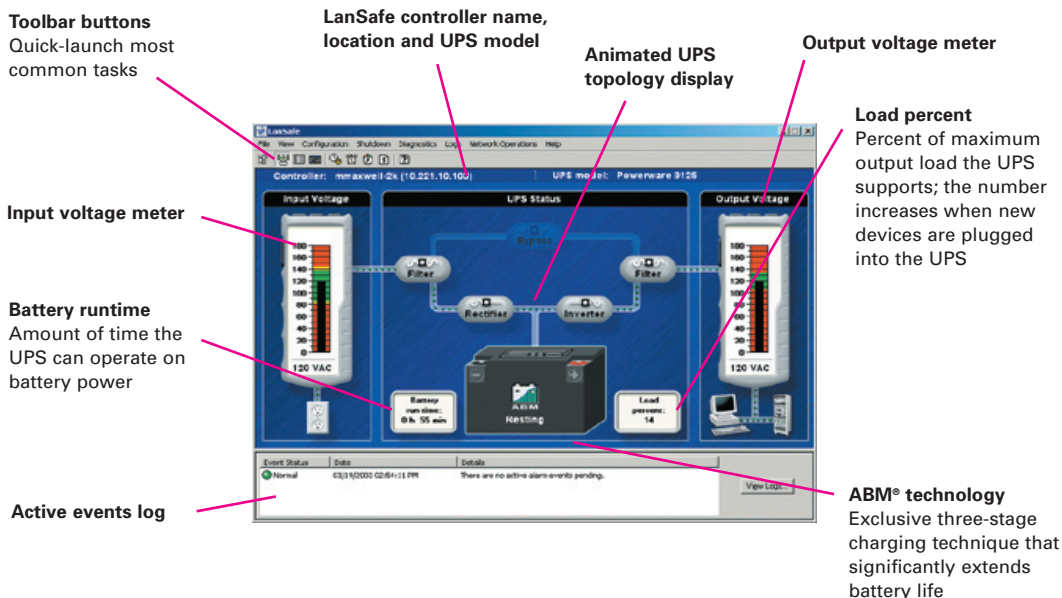
LanSafe provides comprehensive support for both Eaton single-phase and three-phase and Eaton MGE Office Protection Systems single-phase UPS products via serial, USB and network connectivity options.

## How would you like to view your UPS today?

LanSafe offers three user-friendly, custom views for monitoring status, metering information and the internal workings of a UPS. Each view provides a different level of available data, allowing various user groups to select the most compelling and useful view for their specific needs.

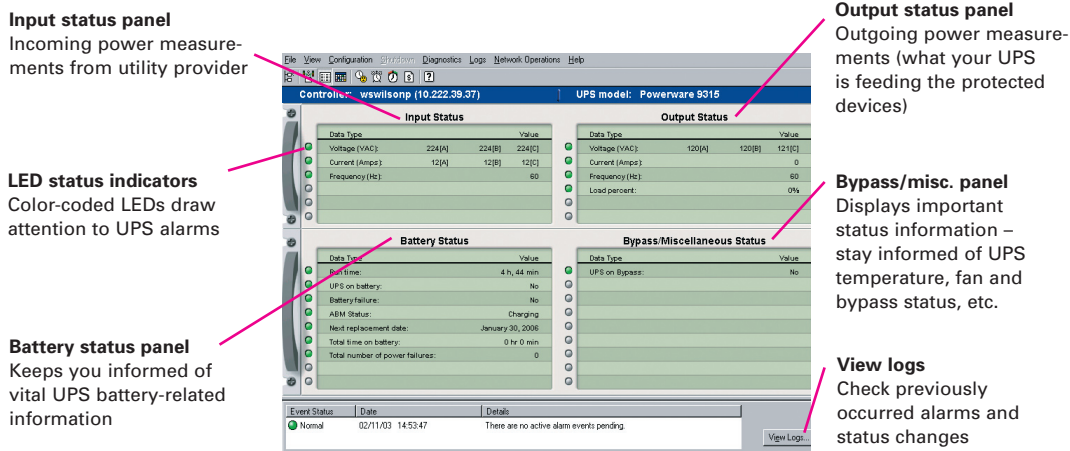
### PowerScope View

The default view for single-phase UPSs is the 3-D PowerScope, which provides crisp, real-time animation of the power flow through the UPS components. Status and metering information is intuitively available at-a-glance, in a graphical format. UPS component topology is automatically detected depending on the UPS model used.



### ControlRoom View

The ControlRoom View is the default view for three-phase UPSs. It provides a comprehensive listing of UPS metering data including inputs, outputs, battery and UPS status information. Color-coded LED status indicators draw attention to UPS alarms.



## History View

The LanSafe History View provides a 7x24x365 visual representation of the system event log in a calendar format. UPS events can easily be reviewed by year, at-a-glance. Color-coded dates display power events that have occurred in the system.

It has never been easier to review historical power problems: what happened, when it happened, how severe the event was, as well as how often it has annually reoccurred. The user may focus on any calendar date to obtain information on the event time, along with a description of the problem.

## Stealth Mode Operation - The invisible sentinel

The Eaton-exclusive Stealth Mode Operation feature enables LanSafe to run invisibly in the background without visual traces. This is particularly useful when integrating LanSafe into a point-of-sale (POS) system, automatic teller machine (ATM) or other environment in which user-awareness of LanSafe is not an option.

When enabled, the user will not see any UPS alarm popups on local ATM/POS computer monitors due to power problems. However, system administrators monitoring the ATM/POS network still receive remote SNMP alarms to their network management systems.

### Go back in time

Select previous years with a calendar-format events summary

**Double-click color-coded event dates for more info**  
Get detailed info of occurred power events

### 7x24x365 Power Event Calendar

Check a full year of power events at a glance

### Date since data collected

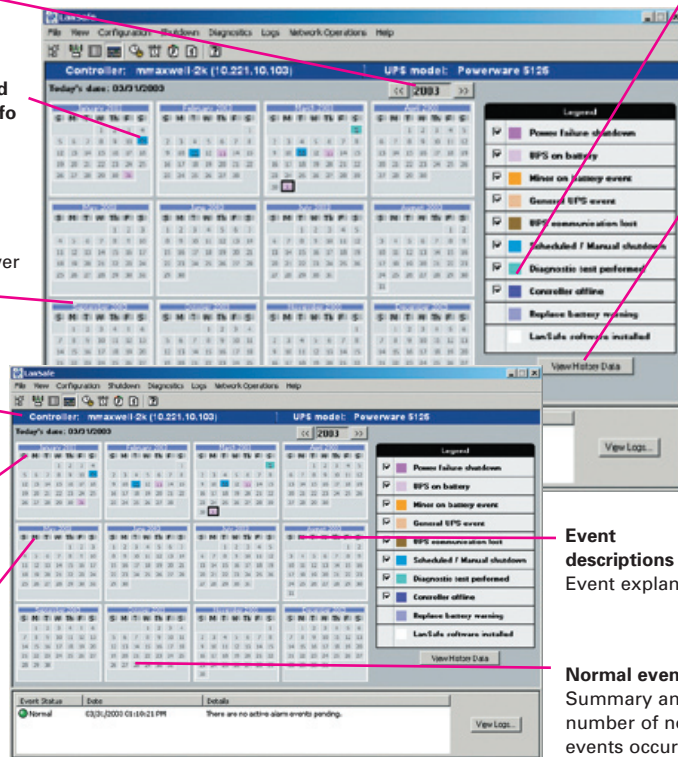
Data collection begins when LanSafe is installed

### Critical events

Summary and number of critical events occurred

### Warning events

Summary and number of warning events occurred



**Select events to review**  
Review only those events that you are interested in

**View history data summary**  
Actual number of normal, warning and critical power events occurred

**Event descriptions**  
Event explanations

**Normal events**  
Summary and number of normal events occurred



**Stealth Mode Operation**  
Removes visual traces, like the LanSafe system tray icon and popup alarms, but still notifies the system administrator "silently" via SNMP



## Cost Savings Calculator - Discover the bottom line

The Cost Savings Calculator (patent-pending) feature is used to determine the amount of money saved by the UPS due to prevented downtime. With this innovative new tool, LanSafe will do the math and generate reports using statistical data gathered from that specific UPS, based on the number of power failures and blackout duration. Calculations can easily be exported to spreadsheets, email and other applications. The user, according to their environment, enters the base costs for calculations.

### Cumulative data

LanSafe keeps track of the total time the UPS has been on battery and the number of power failures

### Export calculations

Paste cost savings calculations into your favorite reporting application

### One-time cost

One-time cost per incident factors include data loss, customer transaction failure, and hardware and software infrastructure damage

### Per hour cost

Per hour cost factors include hourly rates for idle employees and missed transaction opportunities

### The bottom line

How much money your UPS is saving by preventing costly downtime

### Calculate data

Calculate either recent or cumulative savings

## Automatic regional settings detection

LanSafe incorporates automatic regional settings detection with local language support capabilities. Date, time, temperature and UPS receptacle graphics are automatically selected according to the operating system's regional settings. Measurements are displayed around the globe in the formats users are familiar with. Any of the detected settings can be overridden manually.

### Display system info in main views

Enable/disable system info bar in main views

### Choose default view

Select a favorite LanSafe view as the default: PowerScope, ControlRoom or History

### Audible alarms

Enable/disable audio notifications

### Select receptacles per region

Choose the receptacle displayed in the PowerScope View according to the region (auto-selected using system locale)

### Change date, time, and temperature formats

Fahrenheit/Celsius temperature, 24/12 hour time and world date formats (auto-selected using system locale)

## System requirements

### Windows

- Windows 2000
- Windows Server 2003
- Windows XP
- Windows Vista
- Windows 2008

### UNIX

- HP-UX
- IBM AIX
- Red Hat Linux
- SuSE Linux
- SCO UNIX
- SGI IRIX
- Solaris
- Fedora Core
- VMware

### Other

- Mac OS
- Novell NetWare

\* Check [www.eaton.com/powerquality](http://www.eaton.com/powerquality) for most recent software updates and version support

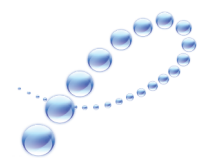
UNITED STATES  
8609 Six Forks Road  
Raleigh, NC 27615 U.S.A.  
Toll Free: 1.800.356.5794

[www.eaton.com/powerquality](http://www.eaton.com/powerquality)

CANADA  
Ontario: 416.798.0112  
Toll free: 1.800.461.9166

LATIN AMERICA  
Argentina: 54.11.4124.4000  
Brazil: 55.11.3616.8500  
México: 52.55.9000.5252

EUROPE/MIDDLE EAST/AFRICA  
Denmark: 45.3686.7910  
Finland: 358.94.52.661  
France: 33.1.6012.7400  
Germany: 49.0.7841.604.0  
Italy: 39.02.66.04.05.40  
Norway: 47.23.03.65.50  
Portugal: 55.11.3616.8500  
Sweden: 46.8.598.940.00  
United Kingdom: 44.1753.608.700



PowerChain  
Management®

ASIA PACIFIC  
Australia: 61.2.9693.9366  
New Zealand: 64.0.3.343.3314  
China: 86.21.6361.5599  
HK/Korea/Taiwan: 852.2745.6682  
India: 91.11.2649.9414 to 18  
Singapore/SEA: 65.6825.1668

Eaton, MGE Office Protection Systems, PowerChain Management, ABM LanSafe and Status@aGlance are trade names, trademarks, and/or service marks of Eaton Corporation or its subsidiaries and affiliates.

All other trademarks are property of their respective owners.

©2009 Eaton Corporation  
All Rights Reserved  
Printed in USA  
SFT19FXA  
March 2009